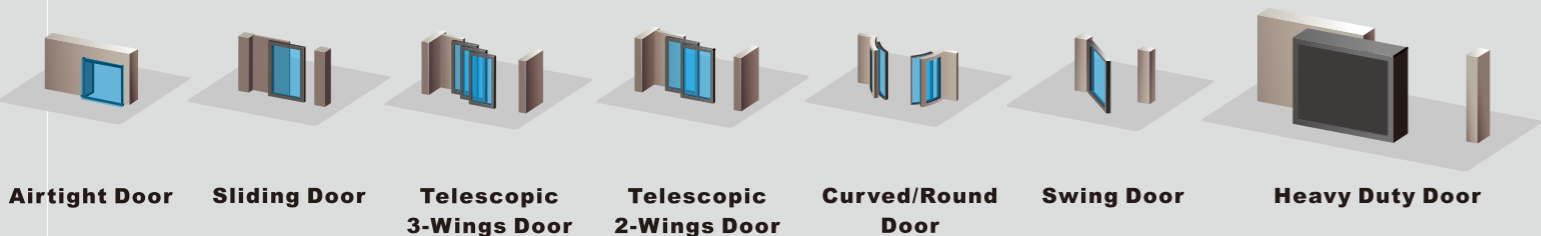




**KTH**  
**K-2 SLIDING DOOR**  
**AUTOMATIC DOOR SYSTEM SERIES**



**Airtight Door    Sliding Door    Telescopic 3-Wings Door    Telescopic 2-Wings Door    Curved/Round Door    Swing Door    Heavy Duty Door**



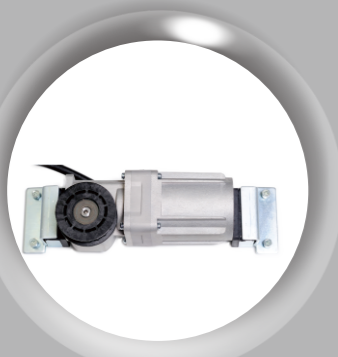
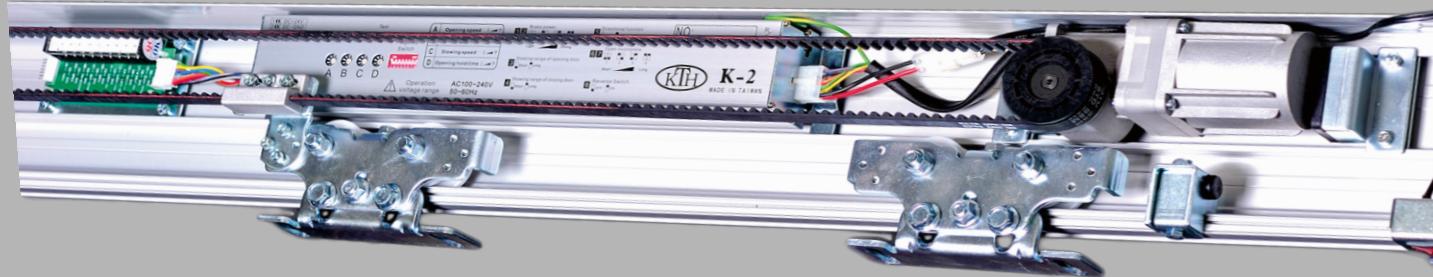
**KTH KING TA HAN TECHNOLOGY CO. LTD.**

Location: Kaohsiung, Taiwan  
 Global Website: <http://www.kth-automaticdoor.com>  
 E-mail address: [export@kthtw.com](mailto:export@kthtw.com)  
[kth@kthtw.com](mailto:kth@kthtw.com)



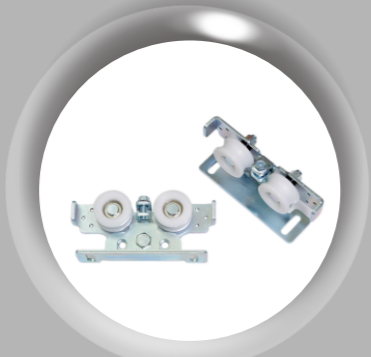
REGISTRATION NUMBER: 8476815113

# KTH K-2 SLIDING DOOR



**WORM GEAR MOTOR**

HIGH TECHNOLOGY, SMALL IN SIZE, MORE SPACE



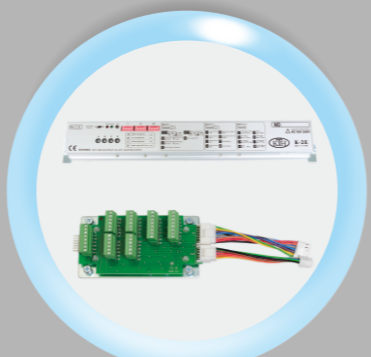
**TWIN-WHEELS HANGERS**

STABLE AND DURABLE "SEESAW WHEEL" HANGERS QUIET AND SMOOTH



**MICRO-CONTROLLER COMBINED TERMINAL BLOCK**

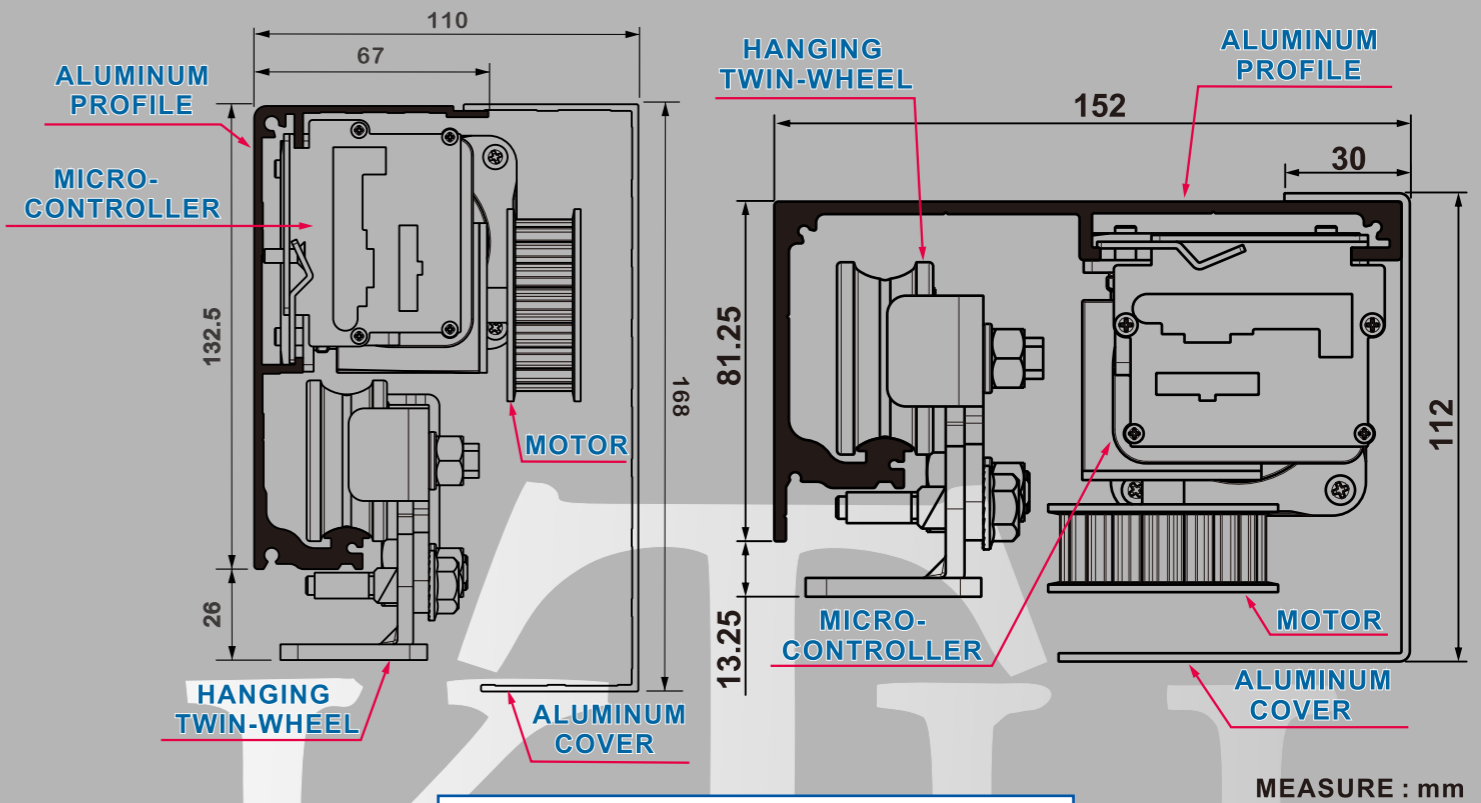
K-2(normal)



**MICRO-CONTROLLER COMBINED TERMINAL BLOCK**

K-2(EN-16005)

## SECTIONAL DRAWING



TYPE	K-2	
MODEL	SINGLE-WINGED	BI-PARTING
DOOR WEIGHT	120kg X1 (DOOR)	100kg X2 (DOOR)
DOOR WIDTH	500mm~2500mm	500mm~2500mm
INSTALL WAY	SURFACE INSTALL	SURFACE INSTALL
MOTOR	DC24V 75W WORM GEAR MOTOR	
CONTROL	MICRO-CONTROL	
POWER CONSUMPTION	75W	
VOLTAGE	AC100V~240V	
ENVIRONMENTAL TEMPERATURE	-20°C~+50°C	
VOLUME	60 DECIBEL (MAX.)	
STARTING SPEED	200~550mm/SEC.	
STARTING TIMES	0~20 SEC. (REGULABLE)	
TRANSMISSION IMPORTANT CONDITION	RACK BELT S8M	
OPENING DOOR RANGE	FULL/HALF-OPEN (REGULABLE)	
TRACTION FORCE	3 kg	

## FEATURES

- Catch-return safety system:**  
During the door motion if there is a person or object block the travel line, the door will return.
- Silent, versatile, resistant high heat and cold**
- Safety certificate: CE**  
Factory certificate: URS ISO 9001
- Excellent Quality & High Performance**  
EN16005: The latest regulation for the safety functions of automatic door in Europe.

